



Download the App



Installation Video

Scan to download the 992noise app from the App Store, or to watch the full installation video walkthrough. Both are also available at [992noise.com](https://www.992noise.com).

Read all instructions before starting

Work through the full guide before picking up any tools. Understanding each step in advance makes the job quicker and reduces the chance of mistakes.

⚠ Heat Warning: Read Before Starting

The exhaust system and mufflers reach extreme temperatures during and after normal operation. Ensure the vehicle has been fully cooled before beginning. We recommend at least 30 minutes after the engine is switched off. Throughout installation, keep all wiring looms, connectors and the controller enclosure well away from the mufflers, exhaust pipes and any heat shields. A loom in contact with a hot surface will melt and may cause vehicle faults or damage. Check the final routing carefully before closing up.

Useful Tools

- Wire cutters (for trimming wire ties)
- Light (for illuminating the darker areas of the engine bay)
- Soft cloths or towels (to protect the spoiler and bodywork from scratches)
- Vehicle ramps ×2 (to raise the rear of the vehicle off the ground)
- Small tool to help push the grey tabs back on the connectors (e.g. small Allen/hex key)

It is possible to fit the entire kit without lifting the vehicle or using any tools in about 15–20 minutes. However, some tools and elevation of the rear of the vehicle may help smooth the process.

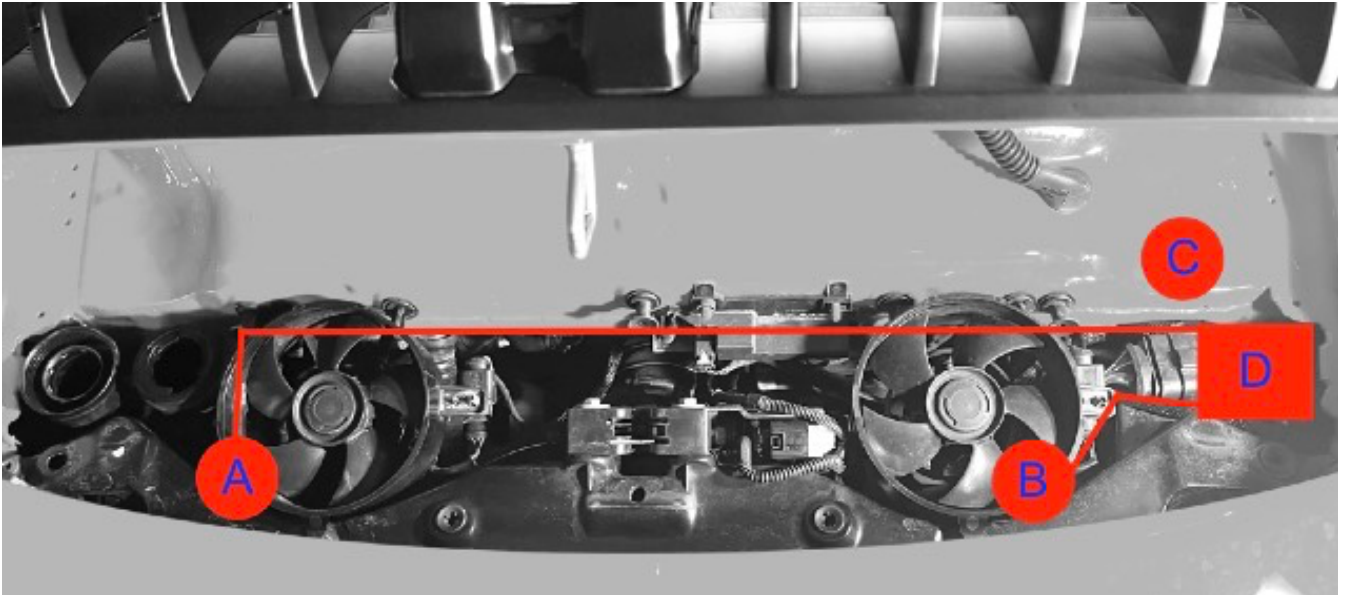
Not confident with vehicle electrics?

This kit is designed to be fitted by anyone — no specialist tools or training needed. Most customers complete it without any assistance. If you are not comfortable working around vehicle wiring, having a second pair of hands or asking a technician to assist is always an option.

Installation Steps

1. Ensure that there are no outstanding technical issues or faults registered with the vehicle. It should be possible to turn on the ignition without any errors appearing on the dashboard.
2. If you are using ramps, reverse the vehicle onto two ramps at the rear.
3. Ensure the parking brake is applied and/or wheels are chocked appropriately.
4. Ensure that the vehicle is cool enough to work on. The exhaust area can be extremely hot even after the engine has been switched off for some time. We recommend letting the vehicle cool for at least 30 minutes.
5. Open the rear engine cover/deck using the release button by the driver's side door sill.
6. If you have a protective cloth or towel, place it on the rear spoiler area to guard against scratches.
7. Remove both the oil filler cap and coolant filler cap.
8. Remove the cosmetic cover over the engine bay. It pops up with gentle force applied around the edge.
9. Re-attach the oil filler cap and coolant filler cap to ensure that no debris or dust accidentally falls into the reservoirs during fitment.
0. Move both electric fan units out of the way by gently popping up the rear attachment, followed by the two forward attachments. No need to disconnect them; move them towards the centreline of the vehicle, out of the way.

- Looking down on each side where the fans used to sit, you should be able to see the ground. This is the path the wiring will take, one on each side. Use the following picture as a guide:
 - Path down to left side exhaust valve
 - Path down to right side exhaust valve
 - Location above ECU where excess wire can be kept
 - Location of the 992noise kit enclosure/box



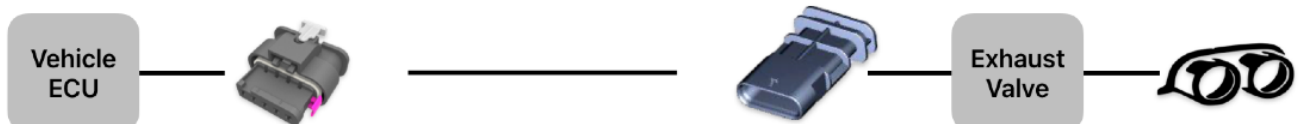
- Place the 992noise controller enclosure on the top of the engine bay, in the centre. Drop the wiring down each side of the vehicle directly underneath where the fans normally sit until the connectors dangle underneath the car or reach the ground.
- Underneath the rear of the vehicle, locate each exhaust valve controller and remove their connectors. To remove a connector, slide the grey tab out first; this unlocks it. Then squeeze the same grey tab and pull the connector clear. This may require some practice. Look at the connectors on the 992noise kit for reference.

⚠ Keep clear of the mufflers

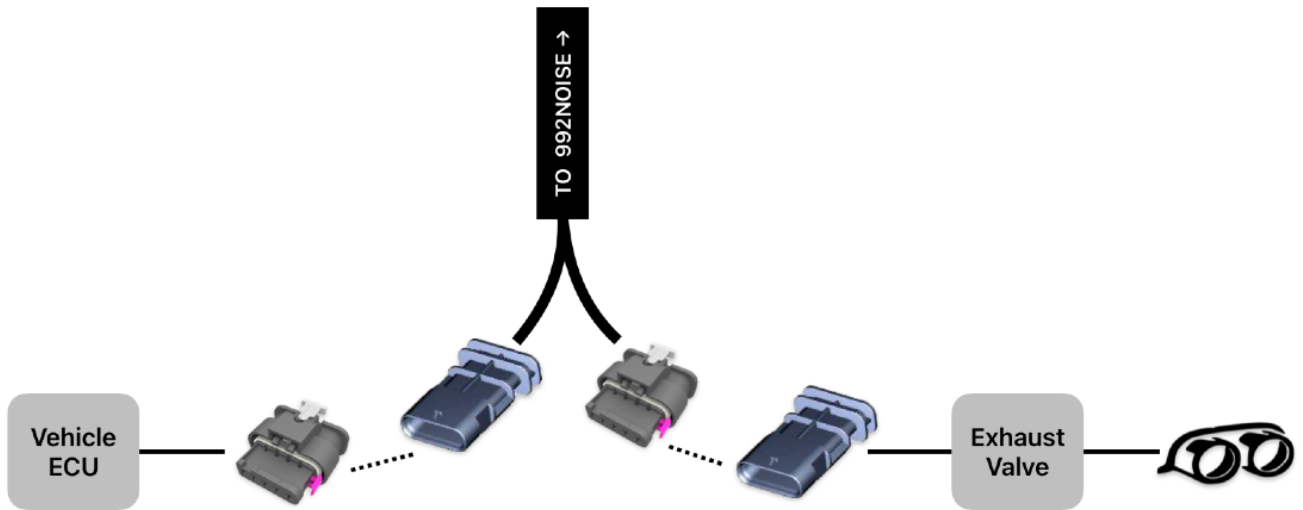
When working underneath the vehicle, the mufflers and exhaust pipes are nearby. Ensure the vehicle is fully cooled before reaching under. Do not rest or route any part of the 992noise loom against the muffler body or exhaust pipes at any point.

- Once the vehicle valve controllers are disconnected, plug the vehicle plug into one end of the 992noise wiring loom. Plug the other end into the vehicle valve controller. Repeat on both sides.

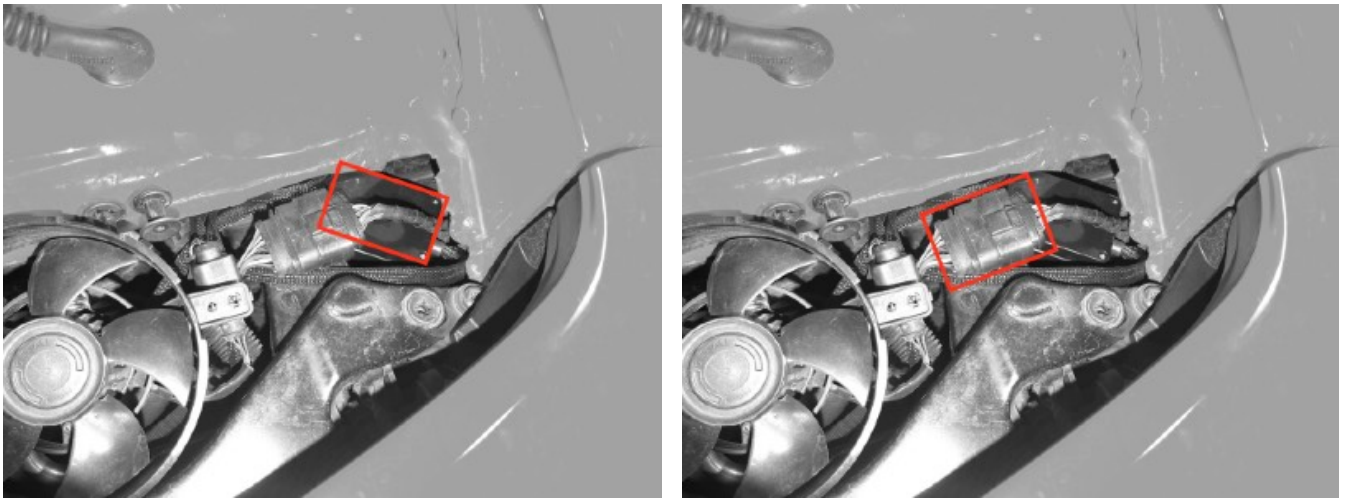
You are changing the wiring from this:



To this, with the 992noise controller connected in-line between the vehicle ECU and the exhaust valve on each side:



5. Gently pull on the wiring loom from the top of the engine bay on each side so that there is no slack underneath the car. The routing should go straight up to the top of the engine bay on both sides. **Ensure that no part of the loom rests on or touches any hot surfaces, including the mufflers, exhaust pipes or heat shields.**
6. Using the supplied wire ties, attach the top of each wiring loom to a suitable point in the engine bay to keep the loom reasonably taut from exhaust valve motor to the top of the engine bay. Not too tight, but the wire should not be able to move around excessively.
7. At the top of the engine, move a connector out of the way on the right-hand side by sliding it towards the front of the car, then lifting up and back towards the rear. This frees up space on the far right-hand side of the engine bay, near the vehicle ECU, for the 992noise controller enclosure to sit.



8. Once the controller is in position, reattach the right-hand side connector and route the 992noise looms appropriately in the engine compartment.
9. Re-fit the fans.
10. Remove the oil and coolant filler caps, re-fit the cosmetic engine cover, then re-fit the oil and coolant filler caps.
11. Close the engine deck lid.

Post-Installation Checklist

Before driving, confirm each of the following:

- No fault lights on the dashboard when ignition is switched on
- All connectors fully seated with grey locking tabs engaged
- No part of the loom is resting on the mufflers, exhaust pipes or heat shields
- Wiring looms are secured with wire ties and cannot move excessively
- 992noise app connects via Bluetooth and valves respond to open/close commands

- Engine deck lid closed and all removed covers re-fitted

Removal

The kit is fully reversible. Removal takes approximately 15 minutes and leaves no trace.

1. Open the engine bay and move the fan units aside as per steps 5–10.
2. Disconnect the 992noise wiring looms from both exhaust valve actuators underneath the car.
3. Reconnect the original factory connectors directly to the exhaust valve actuators on both sides.
4. Remove the controller enclosure and both wiring looms from the engine bay. Cut and remove any wire ties used during installation.
5. Re-fit the fans, cosmetic engine cover, oil and coolant caps, and close the deck lid.

Turn on the ignition and confirm no fault lights are present. The vehicle will return to its original factory exhaust behaviour immediately.

Testing & Troubleshooting

The controller is powered when the vehicle's electronic systems are powered, typically when the vehicle is unlocked or the ignition is switched on. Power will be cut after a period of inactivity if doors are not opened or the engine is not started.

1. Turn on the ignition and listen for any warnings. If there is a problem with the power supply or wiring, the vehicle will typically warn of a failure immediately. The failure message is likely to be a general fault; there will be nothing specific about exhaust valves.
 - a. Note down the error message(s) and check all connections at the rear of the vehicle. Ensure all connectors are fully pushed home and the grey locking tab is engaged.
 - b. Ensure that the looms are not excessively twisted or bent at extreme angles.
 - c. Ensure that where the wiring enters the 992noise controller enclosure, the wires are not under stress or have been pulled out.
 - d. If these checks do not reveal an issue and the fault persists, try disconnecting one side and returning it to a direct connection. This can help identify which side is at fault.
 - e. If single-side disconnection does not help, disconnect the kit entirely and verify that the vehicle returns to no faults.
2. Start the vehicle and ensure there are no warnings. The vehicle will start in default mode. The exhaust flaps will close and the cold start process is likely to begin. After a short while the revs will drop, the noise will decrease and idle will settle.

Valves flickering or opening and closing on their own?

On some vehicles, upon first connection, the exhaust valves may flicker or cycle open and closed. This is the ECU interpreting the new valve signal and adjusting. To resolve: open the 992noise app, set the valves to **Open**, and leave the engine running for approximately 2 minutes without making any further changes. The flickering will stop and the valves will settle. This is a one-time occurrence and does not indicate a fault with the kit.

3. Apple iPhone App

- a. Use the 992noise app to confirm a Bluetooth connection can be established and test manually opening and closing the valves.

4. Apple CarPlay

- a. Connect to CarPlay and verify that valve control works as expected from the CarPlay display.

5. Apple Watch

- a. If using the Apple Watch app, confirm it connects to the controller and that valve open/close commands work from your wrist.

6. Android / Other Devices

- a. Visit **992noise.com** using Chrome, Edge, or Opera and use the browser-based control page.

- b. Verify that you can connect to the controller and adjust the valve position.

Note: Bluetooth Range

Bluetooth range may be affected by various factors. During normal operation, if connection is lost the system will attempt to reconnect automatically. If the app appears out of sync with the controller, closing and reopening the app will re-establish the connection.

Firmware Updates

When a firmware update is available, a prompt will appear on the app home screen and in the settings menu. Updates must be manually started by tapping the Update button. Each update takes at least 5 minutes depending on your internet connection and Bluetooth signal strength. If multiple updates are pending they will be applied one at a time.

1. Start the engine and ensure the app connects to the controller. Running the engine ensures power is constantly supplied throughout the update.
2. Ensure the phone has a good WiFi or cellular signal. The app will indicate when a firmware update is available.
3. Tap *Update Firmware* and confirm on the prompt.
4. The update will begin and display a progress indicator.
5. At the end of the process, the controller will reboot (approximately 4 seconds) and the app will automatically reconnect, showing the new firmware version.

Notes

- The update process is safe. If the engine is turned off, power is cut or signal is lost, the controller will not be damaged.
- To restart after an interrupted update: turn off the engine, lock the vehicle and wait a few minutes to cut power to the controller. Restart the engine and begin again.
- If the progress bar stops, restart and try again. The update should not take longer than 5 minutes.

Disclaimer

Installation of the 992noise Exhaust Valve Controller is carried out entirely at the customer's own risk. 992noise accepts no liability for damage to the vehicle, its components, or any other property arising from incorrect installation, failure to follow these instructions, or use of the kit in a manner inconsistent with these guidelines. This guide is provided in good faith and is accurate to the best of our knowledge at the time of publication. Always read all instructions before starting. If in doubt, seek assistance from a qualified automotive technician. For full terms, please refer to the documentation available at 992noise.com.

For further assistance, contact us at enquiries@992noise.com or visit 992noise.com.

Built and managed by a 992 owner.